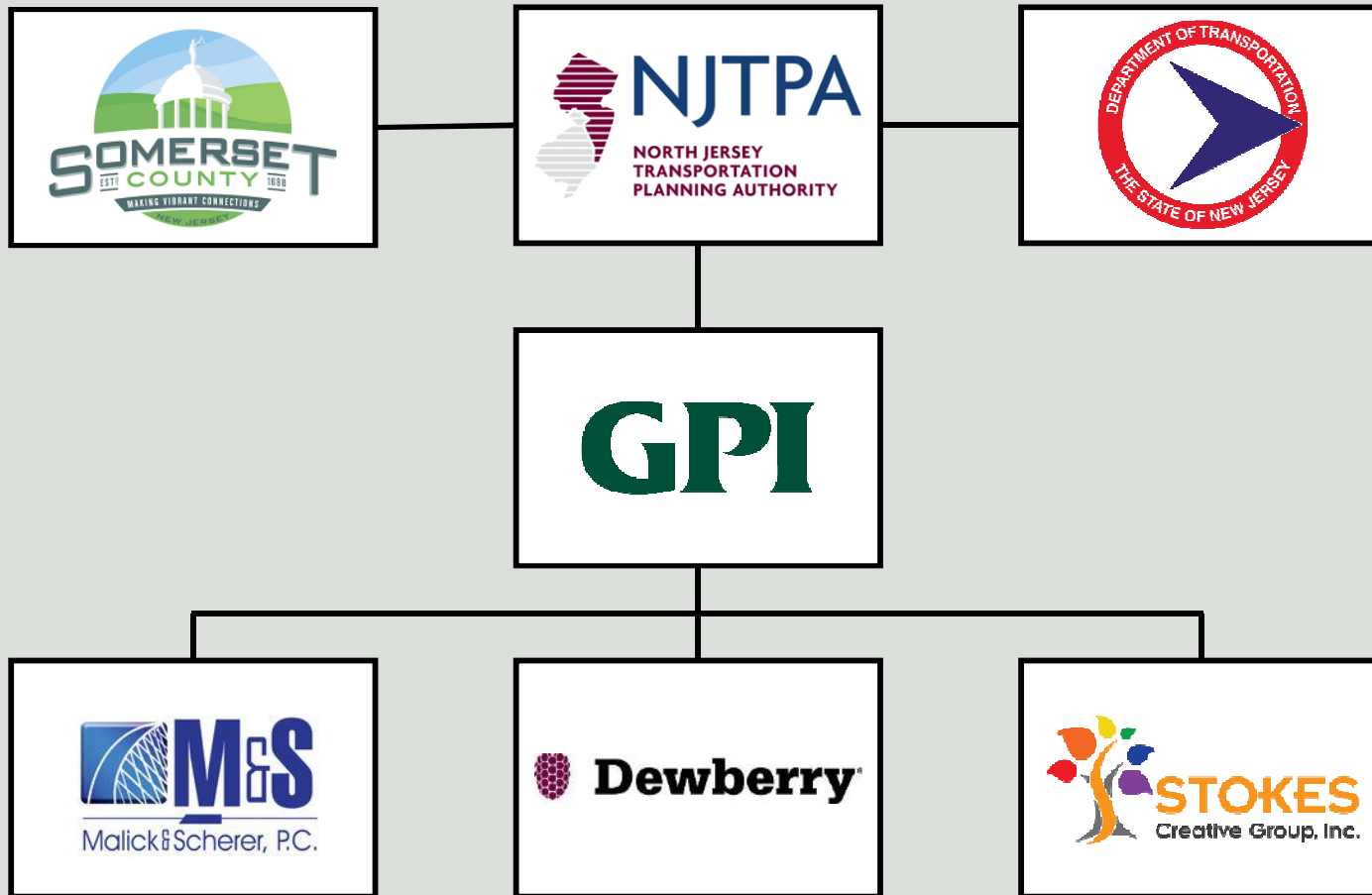


Local Concept Development Study for **Picket Place Bridge over South Branch of Raritan River** Branchburg and Hillsborough Townships, Somerset County



Public Information Center No. 1
May 2, 2019

Project Team



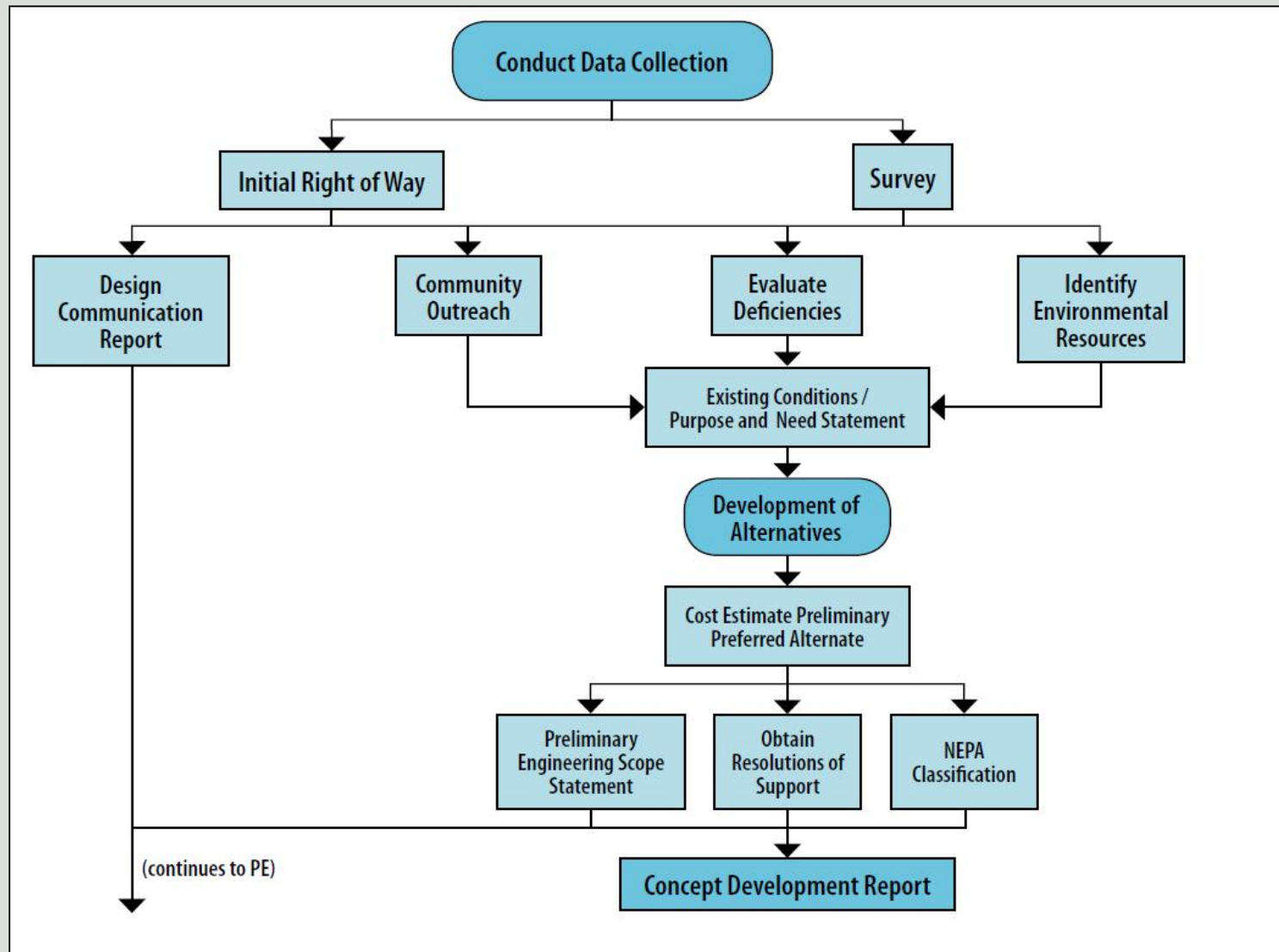
Project Overview

- NJTPA solicited projects from sponsors through their 2018 Local Capital Project Delivery Program.
- Somerset County successfully applied for the Picket Place Bridge to be included under the program to restore the structural integrity of the bridge.
- A key feature of the program is to afford the opportunity for public input and agency collaboration.

Local Concept Development Process

Local Concept Development	Local Preliminary Engineering	Final Design / Right of Way Acquisition	Construction
Purpose and Need Statement	Approved Design Exception Report	Construction Contract Documents and PS&E package	Completed Construction As-Builts
Data Collection and Environmental Screening Report	Cost Estimates (Final Design, ROW and Construction)	Environmental Reevaluations	Update and Finalize Design Communications Report
Selection of Preliminary Preferred Alternative	Approved Environmental Document	Environmental Permits Acquisition of ROW	Close-Out Documentation
NEPA Classification	Approved Project Plan	Update Design Communications Report	
Concept Development Report	Preliminary Engineering Report		
Create Design Communications Report	Update Design Communications Report		

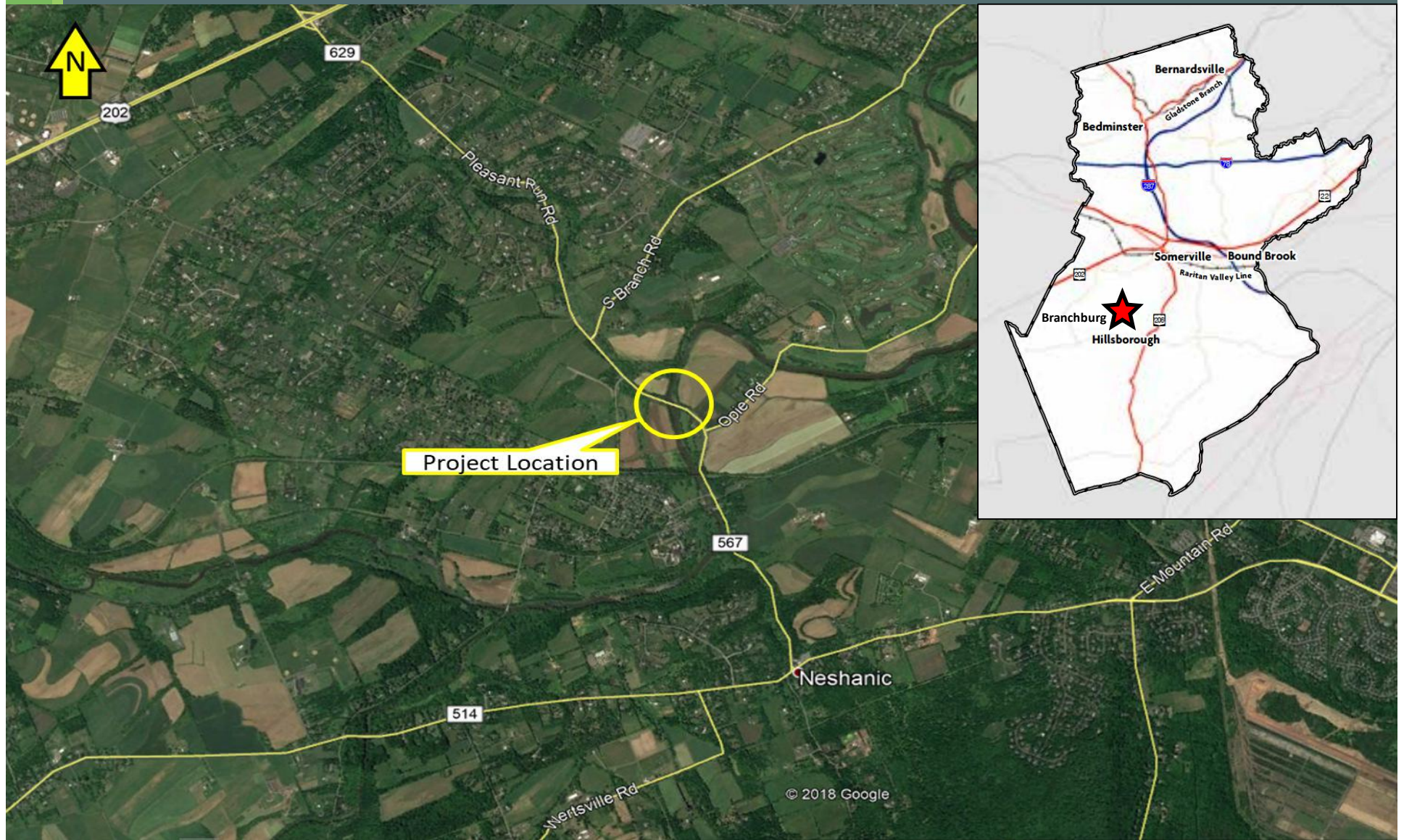
Local Concept Development Process



Environmental Process

- Federally funded project requires NEPA (National Environmental Policy Act) documentation.
- Identify environmental resources and concerns.
- Avoid, minimize and/or mitigate impacts with the Preferred Alternative.
- Coordination with permitting agencies.
- Process includes public input.

Project Location Map

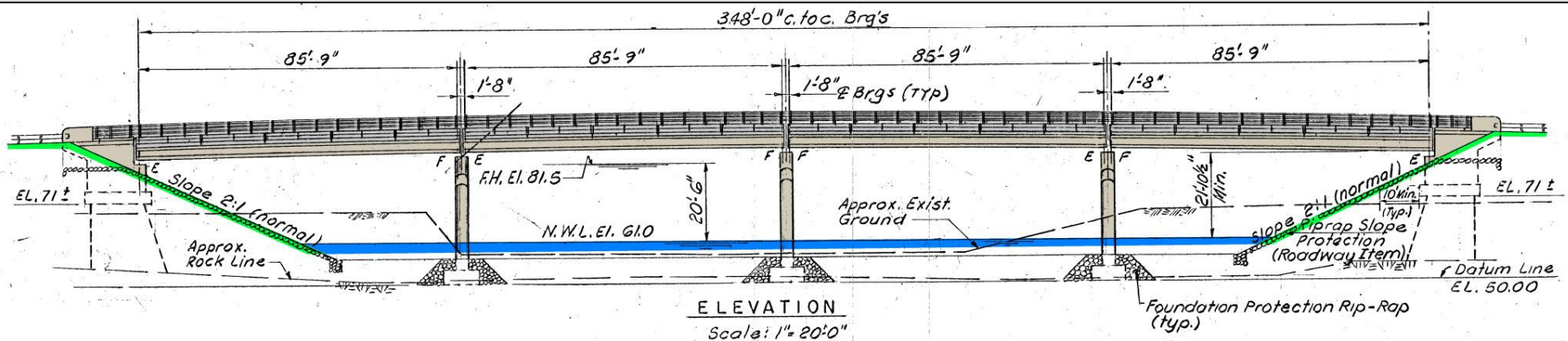


Project Study Area



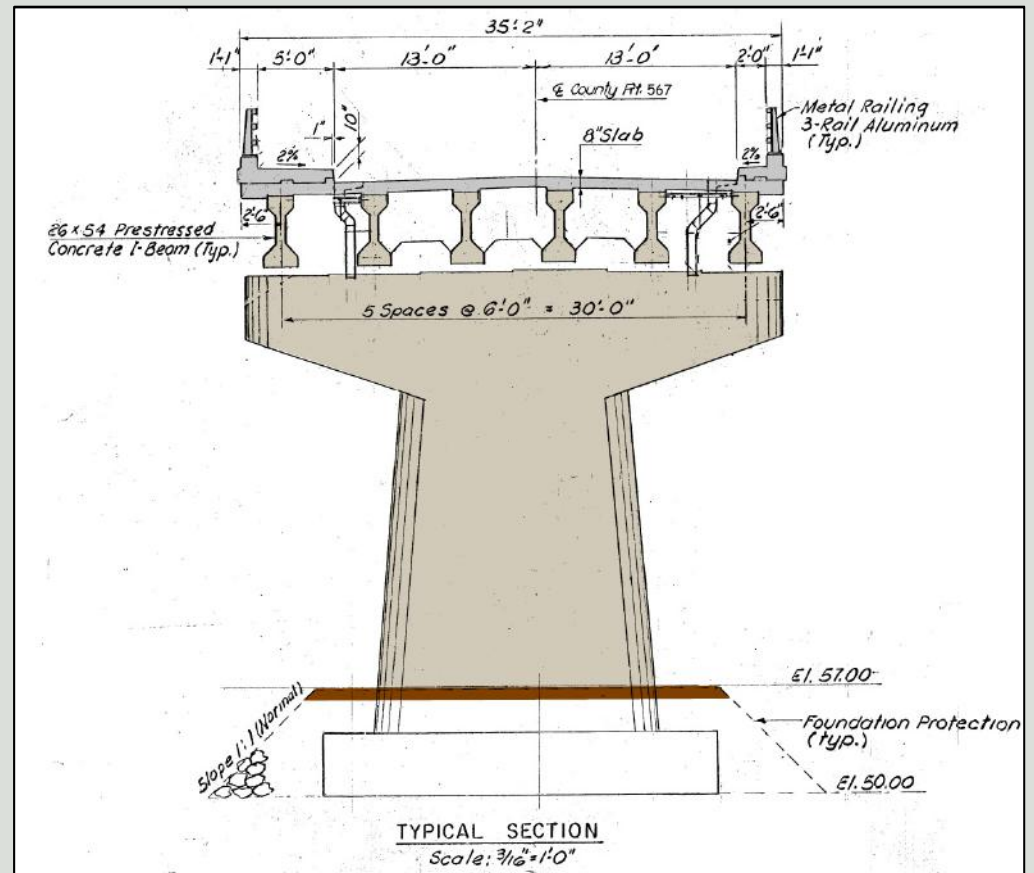
Bridge Information

- Year Built: 1979
- Bridge Type: 355' +/- long four-span, simply supported prestressed concrete I-beam structure supported on reinforced concrete abutments and piers.
- Substructure skewed 25 degrees with respect to the roadway centerline.



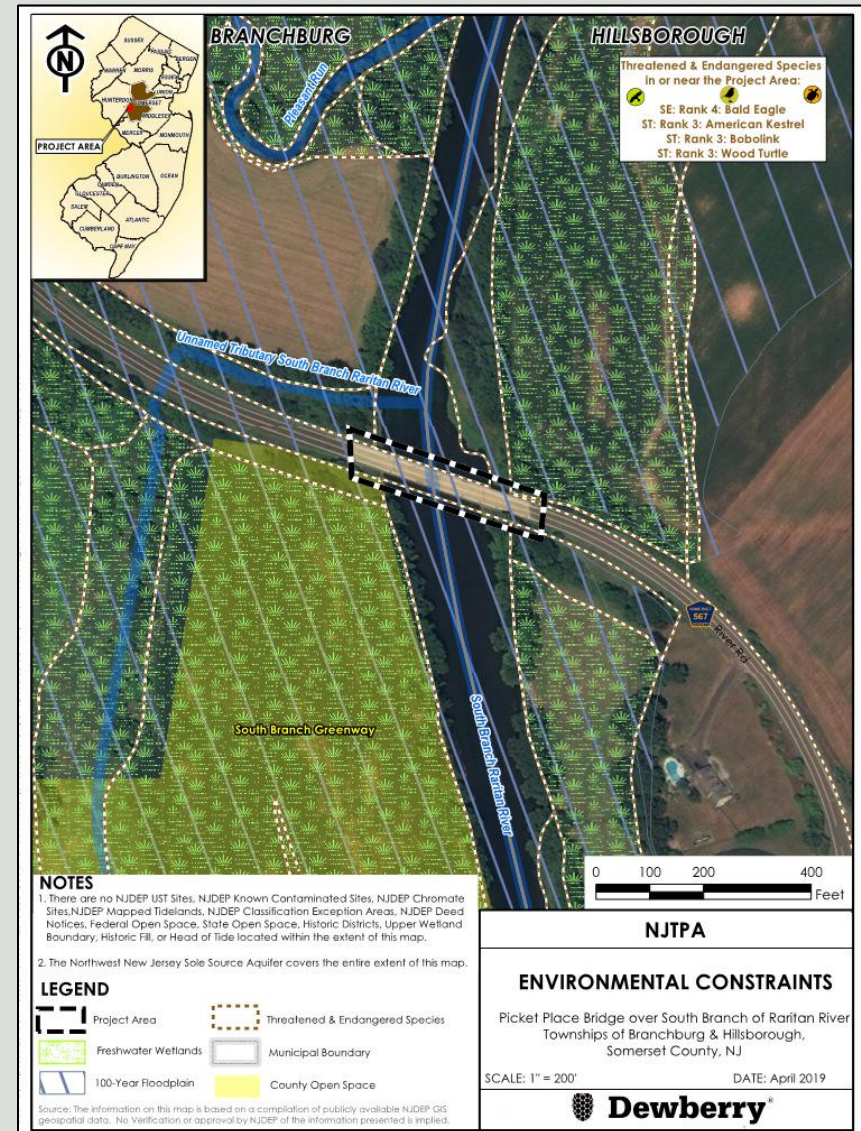
Bridge Information

- Carries Picket Place - an Urban Major Collector roadway with a 40 mph speed limit.
- Carries under 2,500 vehicles per day.
- Furnishes 26' curb-to-curb width, for one lane in each direction of traffic and negligible shoulders.
- Furnishes a 5' wide sidewalk on the north side.



Environment at Site

- Environmental Constraints
 - Floodplain of South Branch of the Raritan River
 - Freshwater Wetlands
 - Potential T&E Species
- Cultural Resources
 - The bridge is not eligible for listing on the New Jersey nor National Registers of Historic Places.
 - No listed historic sites in the immediate vicinity of the structure.



Site Conditions



West Approach to Bridge

Site Conditions



East Approach to Bridge

Existing Bridge Condition

- Classified as Structurally Deficient and Functionally Obsolete - 16th Cycle Bridge Re-Evaluation Survey Report
- Sufficiency Rating = 50.5 (out of 100)
- Substructure in poor condition: Rating = 4



- Bridge is in poor overall condition due to large spalls with exposed, rusting rebar, areas of unsound concrete and cracks.
- Bridge currently not posted for restricted load limits.

Existing Bridge Condition



Exposed, Rusted Rebar

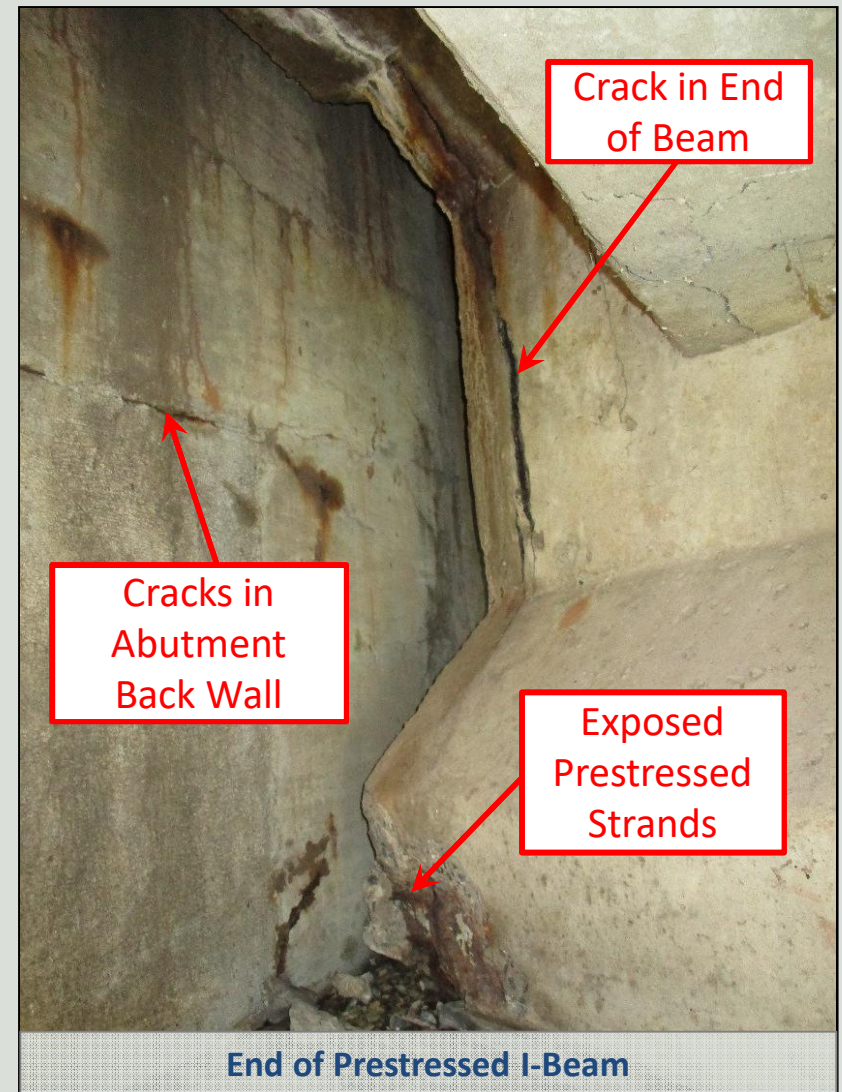
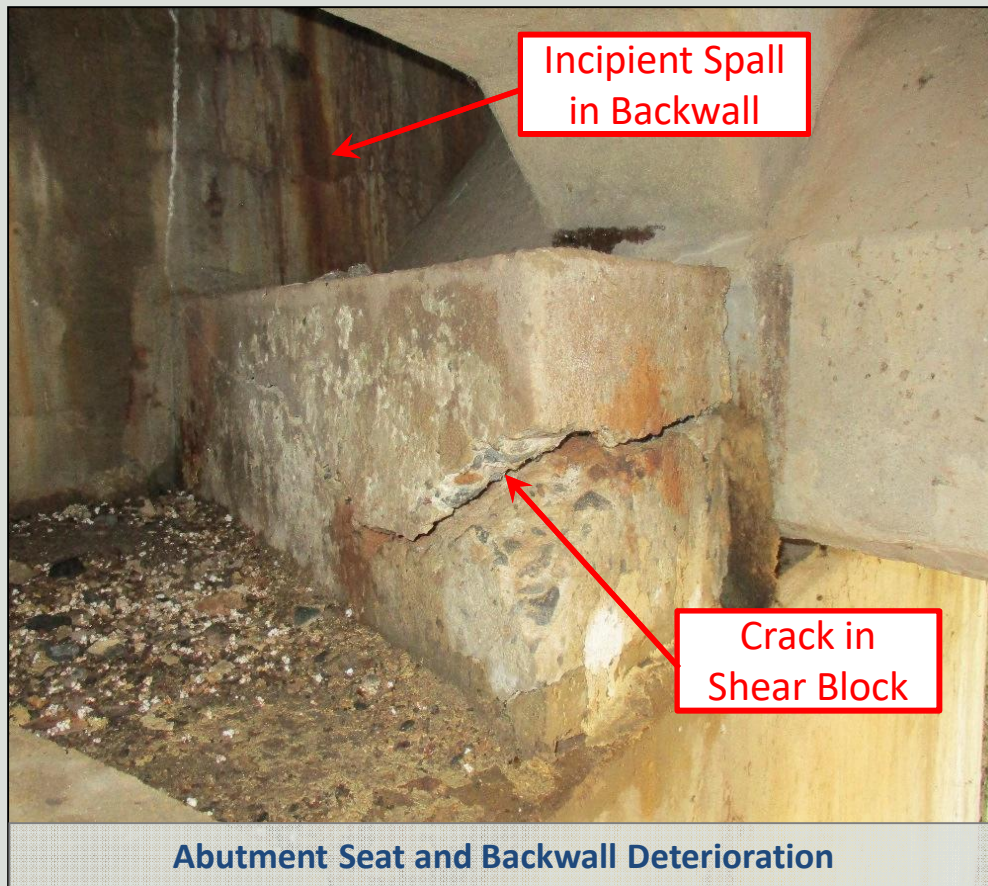
Incipient Spall

Pier 1 West Elevation

Existing Bridge Condition



Existing Bridge Condition



Why are we here?

- ☒ Collected Data
- ☒ Evaluated Existing Conditions
- ☒ Developed our Public Involvement Action Plan
- ☒ Met with Local Officials
- ☒ Meeting with Community Stakeholders and the Public
- ☐ Confirm Purpose and Need

We want your input!

Local Officials Input

Input provided by Local Officials of Branchburg and Hillsborough Townships:

- Maintain at least a single sidewalk on the bridge.
- Accommodate emergency response to maintain coordination between the Townships.
- Study should consider future recreational trail in Branchburg Township.

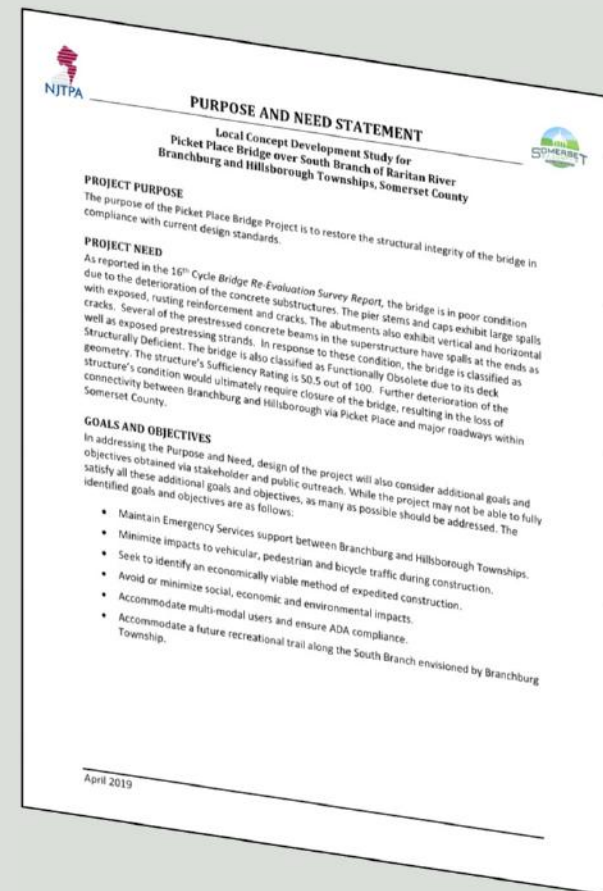
Purpose and Need

Project Purpose

Restore the structural integrity of the bridge in compliance with current design standards.

Project Need

- Bridge is classified as Structurally Deficient.
- Further deterioration would ultimately require closure of the bridge, resulting in the loss of connectivity.



Goals and Objectives

- Maintain Emergency Services support between Branchburg and Hillsborough Townships.
- Minimize impacts to vehicular, pedestrian and bicycle traffic during construction.
- Seek to identify an economically viable method of expedited construction.
- Avoid or minimize social, economic and environmental impacts.
- Accommodate multi-modal users and ensure ADA compliance.
- Accommodate a future recreational trail along the South Branch envisioned by Branchburg Township.

Community Involvement Milestones

Activity	Target Audience	Objective	Tentative Date
Local Officials Meeting No.1	County and Municipal officials	Project introduction, gather information, identify local issues and stakeholders	January 2019
Stakeholder Meeting No. 1	Businesses, residents, etc. directly impacted by the project	Discuss purpose and need and potential impacts; Solicit comments / concerns	May 2019
Public Information Center No. 1	General Public, stakeholders, all interested parties	Project introduction, present draft purpose and need; gather information, identify issues	May 2019
Local Officials Meeting No. 2	County and Municipal officials	Present Alternatives and PPA; Solicit comments / concerns.	July 2019
Stakeholder Meeting No. 2	Businesses, residents, etc. directly impacted by the project	Discuss alternatives; Solicit comments / concerns	September 2019
Public Information Center No. 2	General Public, stakeholders, all interested parties	Present Alternatives and PPA; Solicit comments / concerns.	September 2019
Local Officials Meeting No. 3	County and Municipal officials	Request Resolution of Support	October 2019

Questions and Comments?

Contact:

Lili H. Tsu, Somerset County – Principal Engineer II, Bridge Section
Tel.: 908-231-7079, Email: tsu@co.somerset.nj.us

Or

Nicole Pace-Addeo, Stokes Creative Group
Tel.: 609-859-8400, Email: npace@stokescg.com

Note:

Written comments towards project Purpose and Need will be accepted through **Thursday, June 6, 2019.**

Visit our website: [***www.PicketPlaceBridge.com***](http://www.PicketPlaceBridge.com)