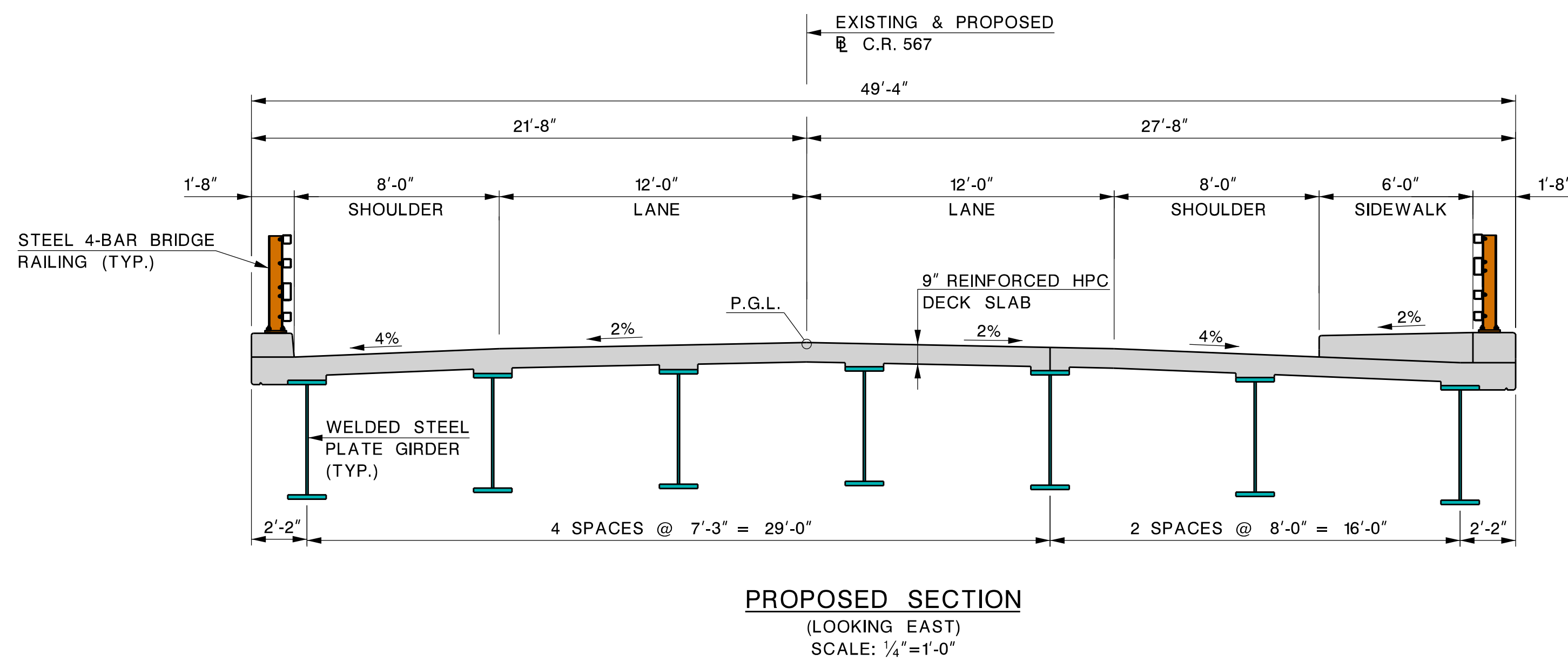
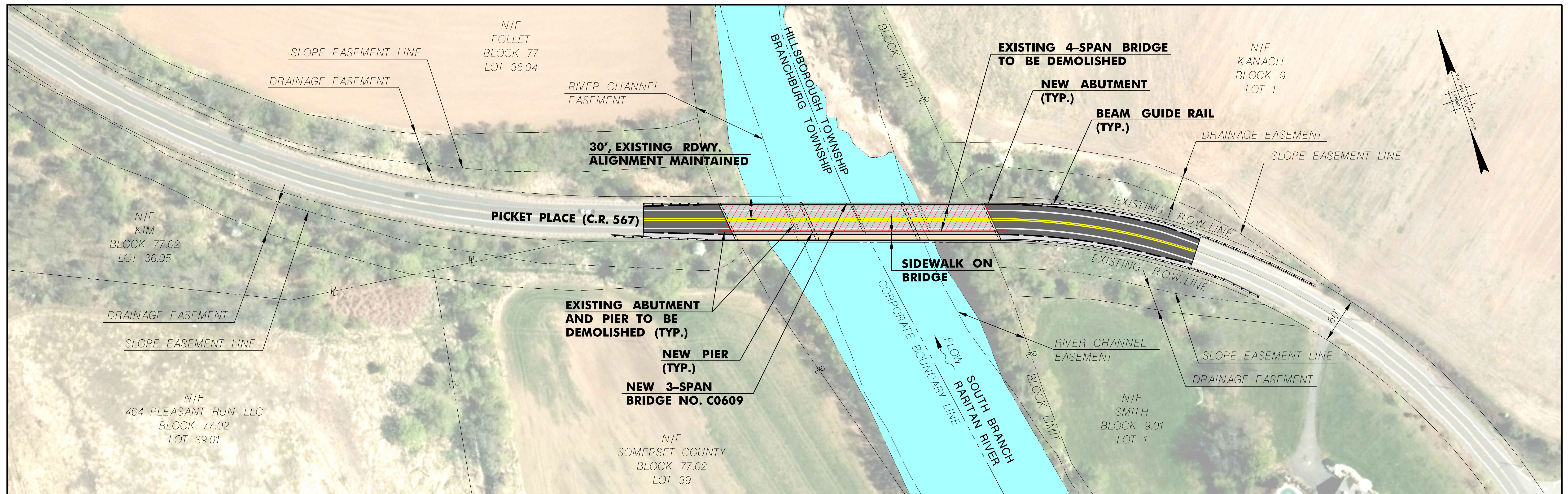


ALTERNATIVE 5: BRIDGE REPLACEMENT, STAGED CONSTRUCTION MAINTAINING 1 LANE



PLAN
SCALE: 1"=60'

DESCRIPTION: COMPLETELY REPLACE EXISTING STRUCTURE ON CURRENT ALIGNMENT. STAGE CONSTRUCTION TO MAINTAIN A SINGLE LANE OF ALTERNATING VEHICULAR TRAFFIC USING TEMPORARY TRAFFIC SIGNALS.

ADVANTAGES

- COMPLETELY NEW SUPERSTRUCTURE AND SUBSTRUCTURE.
- MINIMIZES ROADWAY PROJECT LIMITS.
- VEHICULAR TRAFFIC MAINTAINED THROUGHOUT CONSTRUCTION.
- ROADWAY AND BRIDGE REMAIN WITHIN EXISTING ROW, NO ROW ACQUISITIONS REQUIRED.
- FEWER SUBSTRUCTURE ELEMENTS IN THE RIVER IMPROVES STREAMFLOW AND REDUCES FUTURE MAINTENANCE.

DISADVANTAGES

- REQUIRES ALTERNATING TRAFFIC.
- PEDESTRIAN TRAFFIC IS DETOURED.
- GREATER IN-WATER WORK.

RECOMMENDED PRELIMINARY PREFERRED ALTERNATIVE (PPA)

NOTE:
THIS DRAWING IS IN DRAFT FORM. PLEASE DO NOT REPLICATE. IT HAS BEEN
RELEASED AS CLASSIFIED ADVISORY, CONSULTATIVE AND DELIBERATIVE MATERIAL
PURSUANT TO N.J.S.A 47:1A-6. IT IS INTENDED FOR REVIEW AND COMMENT
PURPOSES ONLY. ANY QUESTIONS, PLEASE CONTACT: LILI H. TSU, SOMERSET
COUNTY PRINCIPAL ENGINEER II, TEL. 908-231-7079, EMAIL: tsu@co.somerset.nj.us