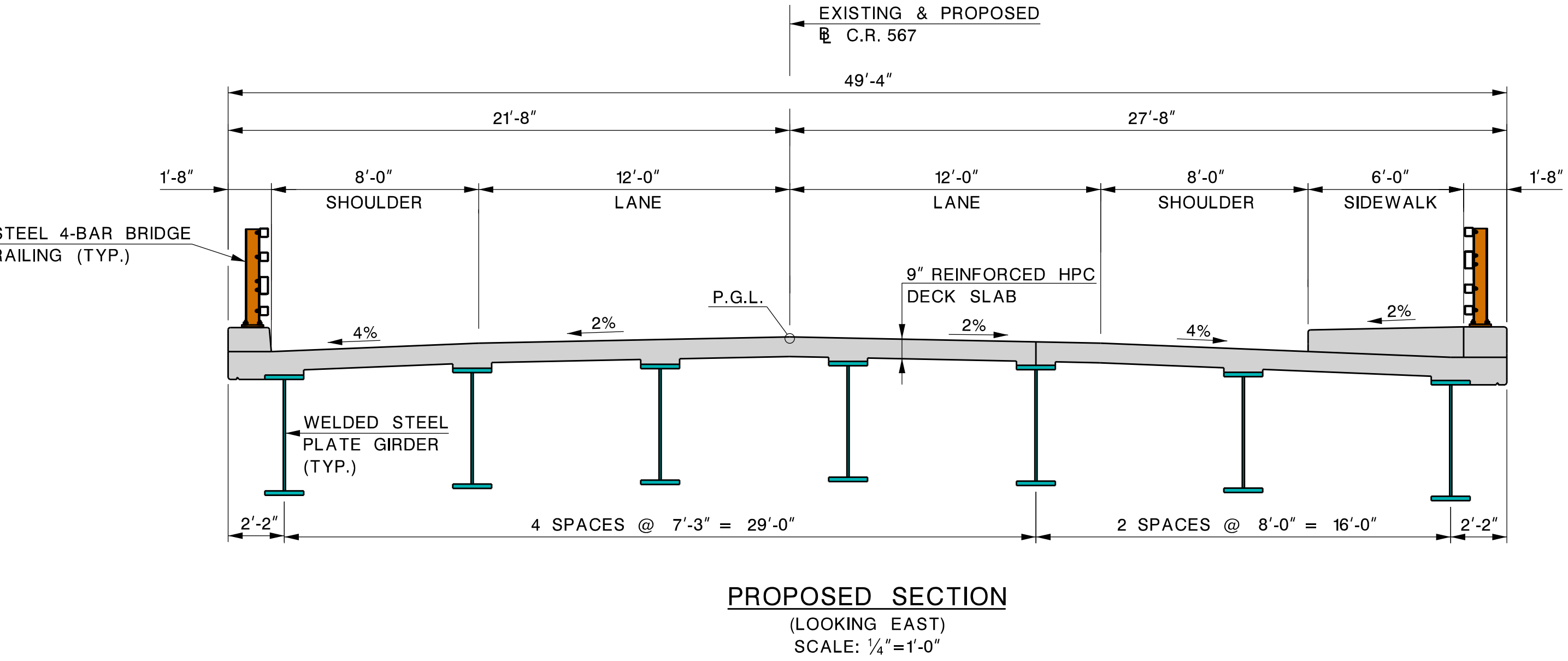
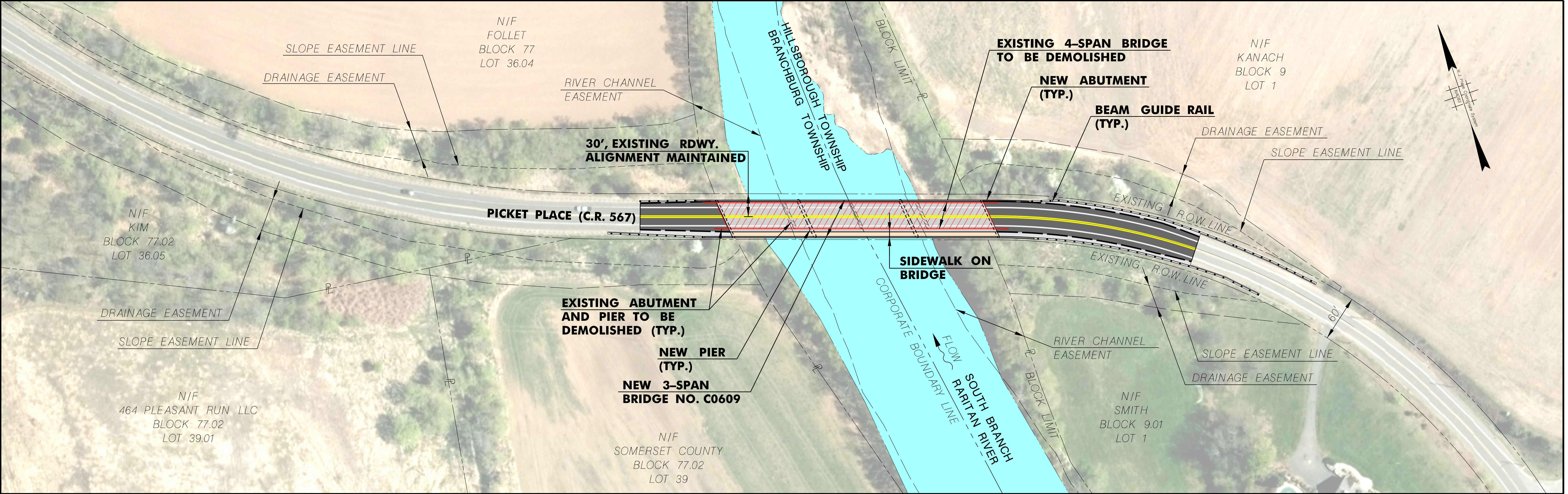


ALTERNATIVE 5: BRIDGE REPLACEMENT, STAGED CONSTRUCTION MAINTAINING 1 LANE



PLAN
SCALE: 1"=60'

DESCRIPTION: COMPLETELY REPLACE EXISTING STRUCTURE ON CURRENT ALIGNMENT. STAGE CONSTRUCTION TO MAINTAIN A SINGLE LANE OF ALTERNATING VEHICULAR TRAFFIC USING TEMPORARY TRAFFIC SIGNALS.

ADVANTAGES

- COMPLETELY NEW SUPERSTRUCTURE AND SUBSTRUCTURE.
- MINIMIZES ROADWAY PROJECT LIMITS.
- VEHICULAR TRAFFIC MAINTAINED THROUGHOUT CONSTRUCTION.
- ROADWAY AND BRIDGE REMAIN WITHIN EXISTING ROW, NO ROW ACQUISITIONS REQUIRED.
- FEWER SUBSTRUCTURE ELEMENTS IN THE RIVER IMPROVES STREAMFLOW AND REDUCES FUTURE MAINTENANCE.

DISADVANTAGES

- REQUIRES ALTERNATING TRAFFIC.
- PEDESTRIAN TRAFFIC IS DETOURED.
- GREATER IN-WATER WORK.

RECOMMENDED PRELIMINARY PREFERRED ALTERNATIVE (PPA)

FIGURE 10